

## DESCRIPTION

TOA's A-3600D Series is a PA amplifier equipped with 4 microphone inputs and 3 auxiliary inputs, and 2-channel zone selector. It employs a PFC circuit. It also features the following functions: Volume control function, Priority function, Chime function, and Remote confirmation function. In addition, it is equipped with a 2-channel input BUS of BUS 1 and BUS 2, and the signal processing function. The A-3600D Series mixer amplifier is ideal for paging announcement and BGM applications in schools, offices, and super markets.

## SPECIFICATIONS

|                           |  |
|---------------------------|--|
| Power Source              | 100 – 240 V AC, 50/60 Hz   |
| Rated Output              | 60 W   |
| Power/Current Consumption | 96 W (rated output), 40 W (based on EN62368),<br>200 mA or less (when power switch is OFF)   |
| Frequency Response        | 50 Hz – 20 kHz ±3 dB (1/8 rated output)  |
| Distortion                | 1 % or less at 1 kHz, rated power (20 kHz LPF (AUX-0025))  |
| Tone Control              | Bass: ±10 dB at 100 Hz<br>Treble: ±10 dB at 10 kHz   |
| Signal to Noise Ratio     | 88 dB or more (Master volume: min)<br>76 dB or more (Master volume: max)<br>55 dB or more (INPUT 1 – 6)<br>72 dB or more (INPUT 7)<br>(A-weighted)   |
| Audio Input               | INPUT 1, 2: -60 dB (*1) (MIC)/-20 dB (*1) (LINE) selectable, 600 Ω,<br>electronically-balanced, removable terminal block (3 pins)<br>Note: MIC inputs are equipped with phantom power (24 V DC, ON/OFF<br>switchable).<br>INPUT 3, 4: -60 dB (*1), 600 Ω, electronically-balanced, removable terminal block (3 pins)<br>Note: Equipped with phantom power (24 V DC, ON/OFF switchable).<br>INPUT 5, 6: MIC (BUS 1)/LINE (BUS 2) selectable<br>MIC: -60 dB (*1), 600 Ω, electronically-balanced, removable terminal block (3 pins)<br>LINE: -20 dB (*1), 10 kΩ, unbalanced, RCA pin jack × 2<br>INPUT 7: -20 dB (*1), 10 kΩ, unbalanced, RCA pin jack × 2<br>PWR AMP IN: 0 dB (*1), 600 Ω, unbalanced, RCA pin jack |
| Input Bus                 | INPUT 1 – 4 : BUS 1<br>INPUT 5, 6 : BUS 1/BUS 2 selectable<br>INPUT 7 : BUS 2  |
| Audio Output              | SPEAKER OUT: Low impedance (8 – 16 Ω)/<br>High impedance (DIRECT, ZONE 1/ZONE 2: 100 V/total 170 Ω),<br>removable terminal block (6 pins)<br>(ZONE 1/ZONE 2 is selectable, Max. 60 W per output)<br>REC OUT: 0 dB (*1), 600 Ω, unbalanced, RCA pin jack<br>LINE OUT 1, 2: 0 dB (*1), 600 Ω, unbalanced, RCA pin jack,<br>(Interlock with zone selection is possible)   |
| Control Input             | 4 channels, no-voltage make contact input, open voltage: 35 V DC or less,<br>short-circuit current: 10 mA or less, removable terminal block (4 pins)<br>REMOTE VOLUME: Removable terminal block (4 pins)<br>ZONE CONTROL IN: No-voltage make contact input, open voltage: 35 V DC or less,<br>short-circuit current: 10 mA or less, removable terminal block (4 pins)  |
| Control Output            | POWER REMOTE OUT: Open collector output, withstand voltage: 30 V DC or less,<br>control current: 25 mA or less, removable terminal block (4 pins)<br>EMERGENCY OUT: Open collector output, withstand voltage: 30 V DC or less,<br>control current: 25 mA or less, removable terminal block (4 pins)<br>ZONE CONTROL OUT: Open collector output, withstand voltage: 30 V DC or less,<br>control current: 25 mA or less, removable terminal block (4 pins)   |
| Chime                     | 1-note, 2-note, or ascending 4-note chime, or None selectable with switch setting  |
| Indicators                | 5-point LED output level meter, Power indicator LED, LAN Connect indicator LED,<br>Priority indicator LED, Emergency indicator LED, Thermal protection indicator LED,<br>Over current protection indicator LED, CPU RUN indicator LED, Error indicator LED,<br>Zone 1 indicator LED, Zone 2 indicator LED  |
| Operating Temperature     | -10 °C to +40 °C (14 °F to 104 °F)   |
| Operating Humidity        | 85 %RH or less (no condensation)   |
| Finish                    | Panel: ABS resin, black<br>Case: Surface-treated steel plate, black, paint   |
| Dimensions                | 420 (W) × 96.1 (H) × 313.1 (D) mm (16.54" × 3.78" × 12.33")  |
| Weight                    | 5 kg (11.02 lb)  |

### SPECIFICATIONS

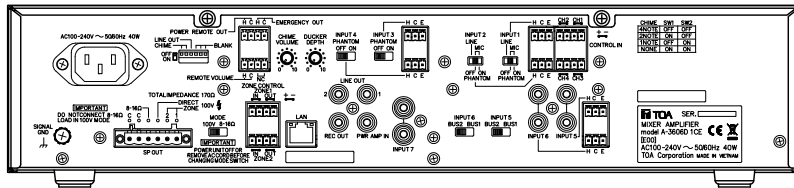
|           |   |
|-----------|---|
| Accessory | Power cord (2 m (6.56 ft)) ---1, Audio input removable terminal plug (3.81 mm, 3 pins) ---6, Control I/O removable terminal plug (3.81 mm, 4 pins) ---4, Remote control removable terminal plug (3.5 mm, 4 pins) ---2, Speaker out removable terminal plug (5 mm, 6 pins) ---1, Volume control cover ---4 |
| Option    | Rack mounting bracket: MB-25B<br>Perforated panel : PF-013B   |

(\*1) 0 dB = 1 V

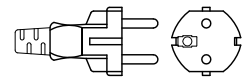
### APPEARANCE

Rear View

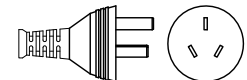
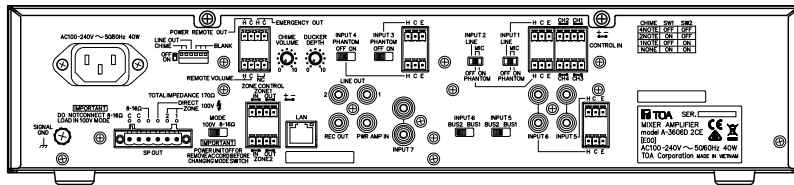
1CE model



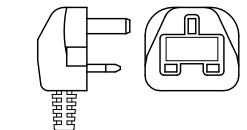
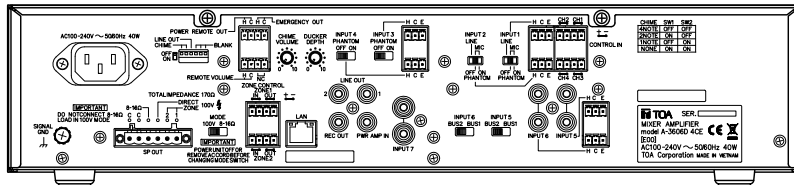
AC plug



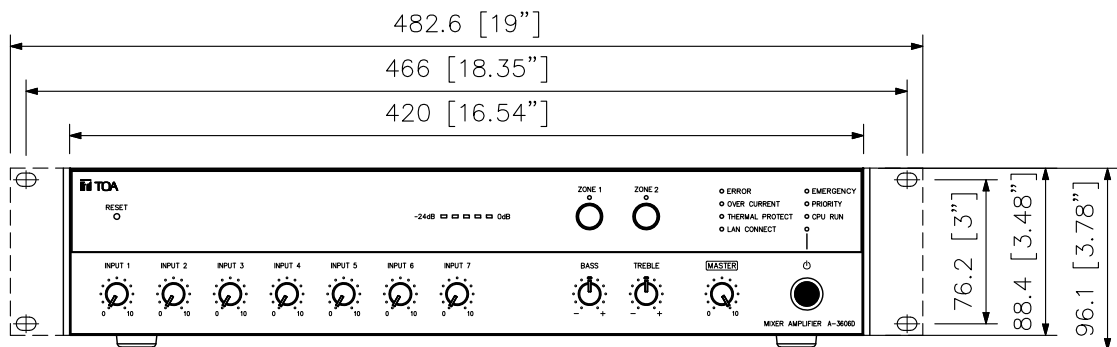
2CE model



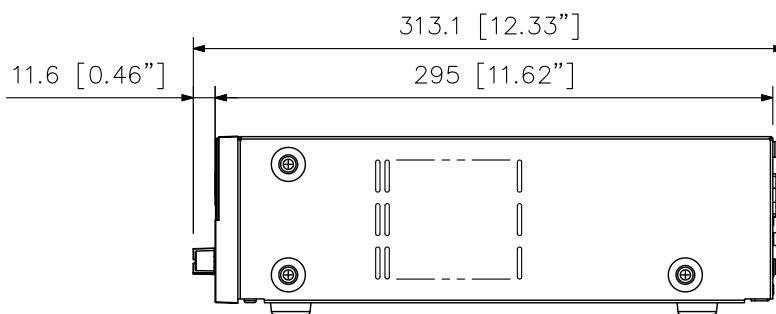
4CE model



Front View



Side View



UNIT: mm SCALE: 1/4